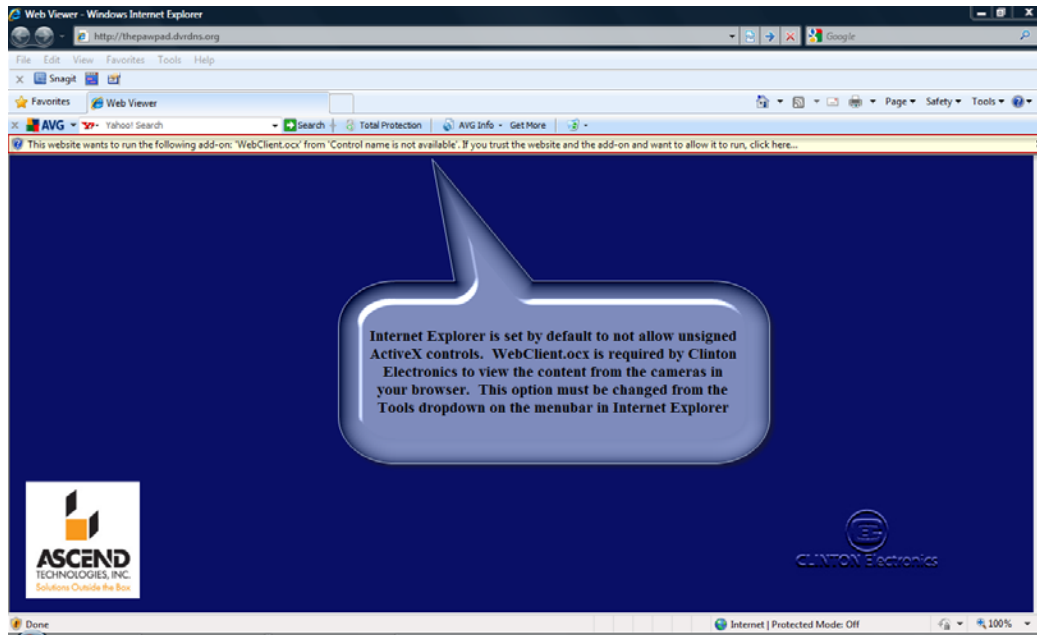


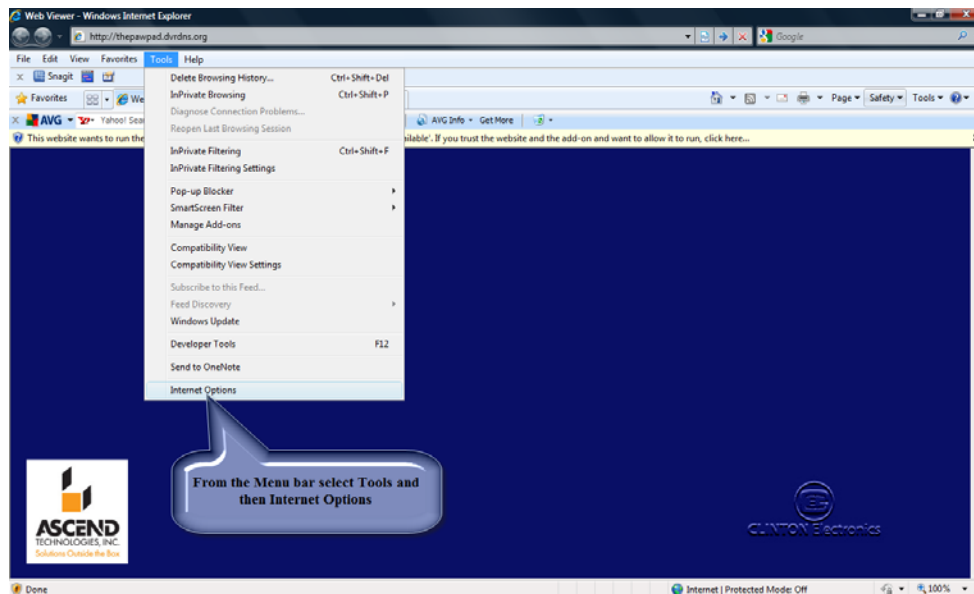


The Paw Pad Remote Camera View Setup Instructions

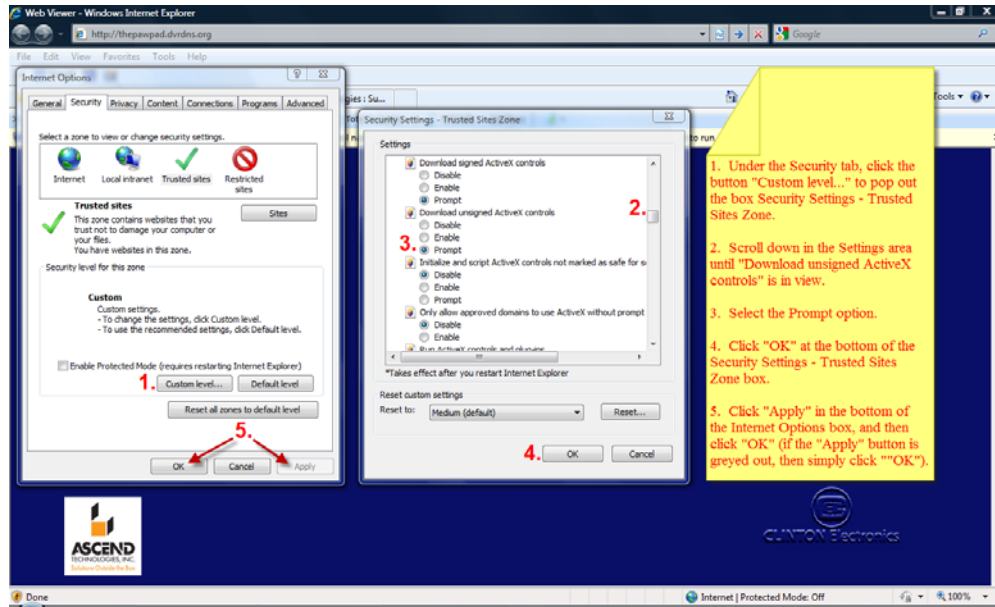
1. Open Internet Explorer and go to the following address: <http://thepawpad.dvrDNS.org/> and the following ActiveX Control warning.



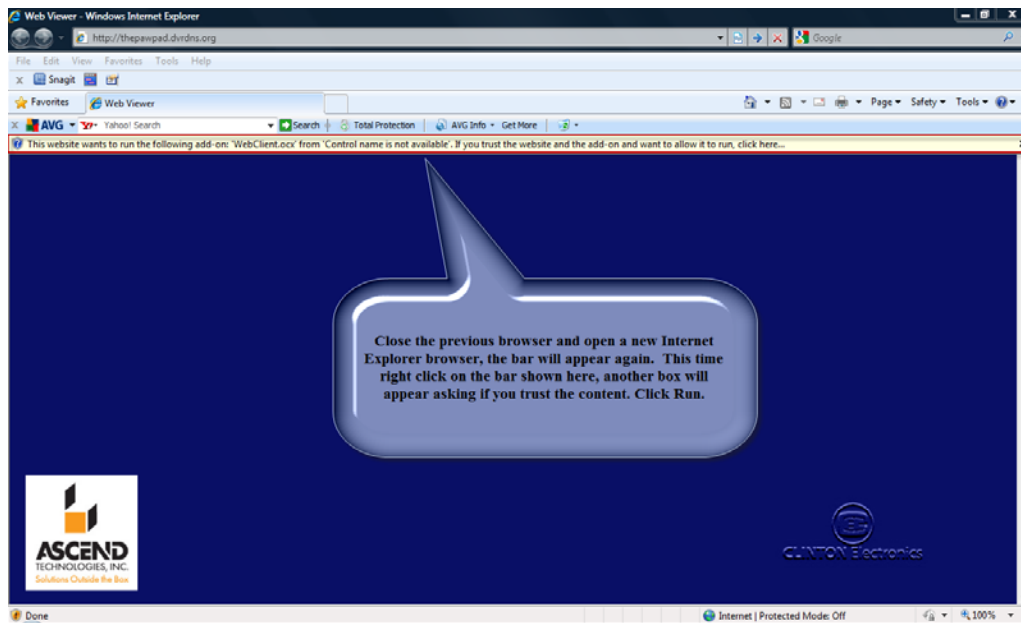
2. Once in Internet Explorer, go to the Tools tab and scroll down to Internet Options



- Once the Internet Options tab is open, go to the Security tab and click on the Custom Level button. A new window will open and you need to scroll down till you see "Download Unsigned ActiveX Controls" and set it to prompt. It is most likely set to disable by default. Click OK in both windows to close them.



- Close Internet Explorer and re-open. The ActiveX Control prompt will come up again in the top area of the browsing window. Right click on the bar to open the "Run" option and the software will run for remote viewing.



5. Once the file runs, the remote viewer will show up in the Internet Explorer window with the login credentials in the lower right corner. Once you enter those credentials and click Connect, the cameras will show up in the remote viewer.

